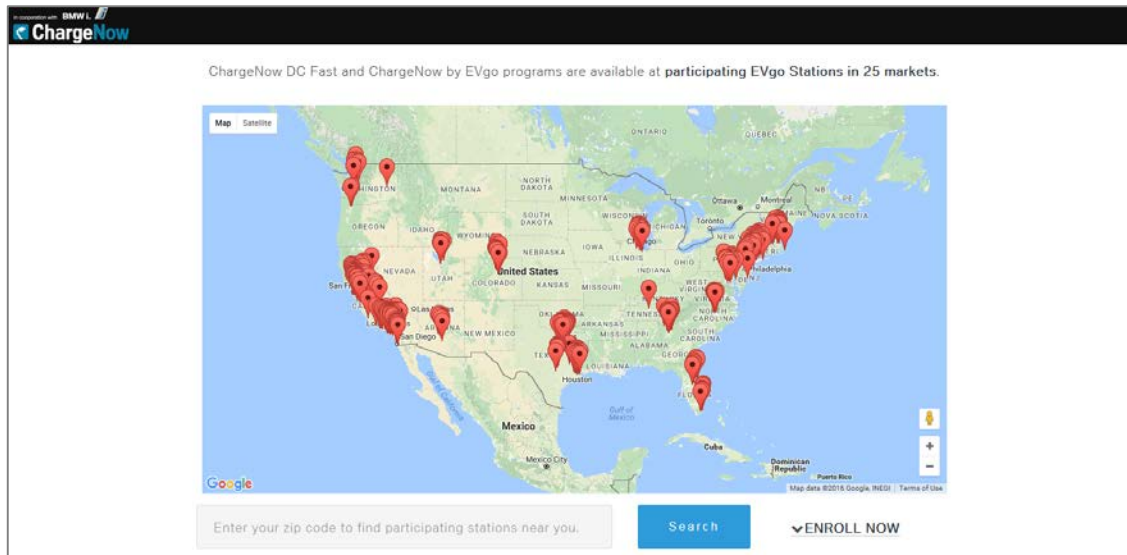
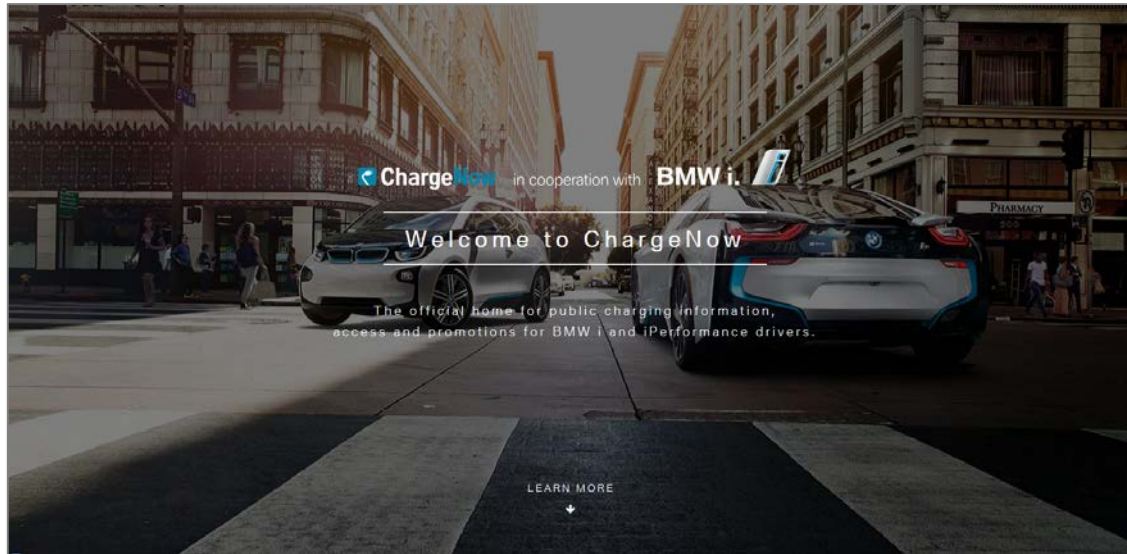


WWW.CHARGENOWUSA.COM. A VERY SIMPLE WAY TO VIEW CHARGING OPTIONS AND OWNER BENEFITS!








Simply enter the vehicle VIN and the ChargeNow card number and press 'Submit'

The image shows a dark-themed enrollment form. At the top, it says "Explore the ChargeNow by EVgo program designed for your vehicle". Below that, it says "Fill out the fields below". There are four input fields: "Card #", "Email", "VIN (last 7)", and "ZIP". There are "SUBMIT" and "RESET" buttons. At the bottom, there is a note: "Your ChargeNow card number is located on the back of the card above the bar code." and "Your BMW vehicle's VIN can be found on the vehicle's registration, in the corner of the driver side windshield, or on the driver side door jamb."

All relevant charging options, including any current BMW owner benefits or offers will appear!

CHARGENOW: PUBLIC CHARGING ACCESS, SPECIAL OFFERS FOR BMW DRIVERS. ENROLLMENT BEGINS WITH THE CHARGENOW CARD (IN THE GLOVEBOX).



	Program	ChargeNow By ChargePoint 	ChargeNow DC Fast 	ChargeNow by EVgo 
Program Description Overview and Cost.	Overview	Access to ChargePoint-networked public chargers across the U.S.	24 months of no cost, unlimited DC Fast and Level 2 charging sessions at participating EVgo stations in <u>25 markets</u> .	Introductory pricing offers at participating EVgo stations in 25 markets . Choose from Annual Pass or Pay As You Go .
	Charging time per session	Not applicable	30 min DC Fast + 1 hour Level 2 per session	Annual Pass. DC Fast+ L2 plan: 30 min DC Fast + 1 hour Level 2 per session or ----- Level 2 plan: 2 hours Level 2 per session
	Cost	Prices vary by station. Many offer no-cost charging.	No-cost, unlimited charging sessions.	1. Annual Pass. Enroll by 12/31/16. DC Fast+ L2 plan: \$99 Level 2 plan:\$39 or ----- 2. Pay As You Go. Enroll by 7/31/17. Save up to 30% each time you charge. DC Fast: \$2.95/session + \$0.15/min. Level 2: \$1.20 /plug-hr.
BMW i3 	Vehicles purchased prior to 11/1/15	Activate the ChargeNow card in the BMW Portfolio (glovebox) at www.chargenow.com/us for ChargeNow by ChargePoint access.	Not available	Enrollment for ChargeNow by EVgo begins at www.ChargeNowUSA.com .
	Vehicles purchased on or after 11/1/15		Customers in 25 markets who buy or lease a MY15 or later BMW i3 from a BMW i Center. Fleets customers not eligible. Enroll in ChargeNow DC Fast on or before 12/31/18 at www.ChargeNowUSA.com .	
BMW i8 + iPerformance 			Not available	